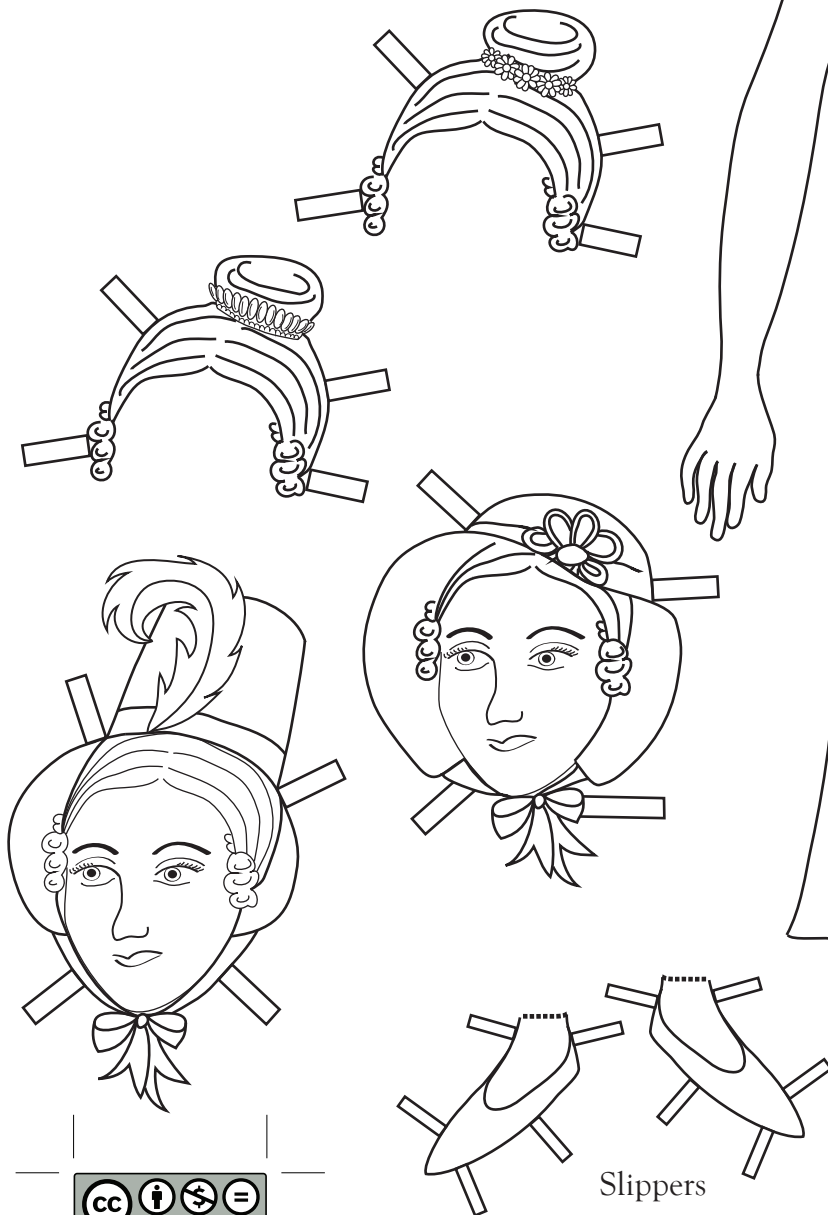


Regency Paper Dolls

Instructions

1. Cut out your doll.
2. Color the hairstyles, accessories, clothes, and shoes.
3. Cut out each attachable
(*Be careful not to cut off the tabs!*)
4. "Style" your doll! Attach each piece by placing it over the doll and folding the tabs from front to back to secure.



Necklaces

